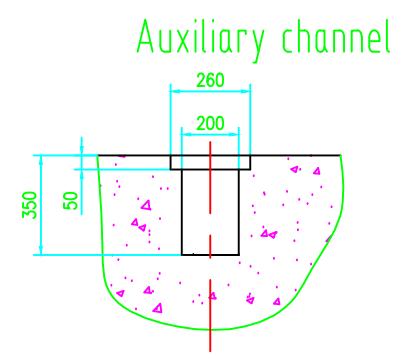
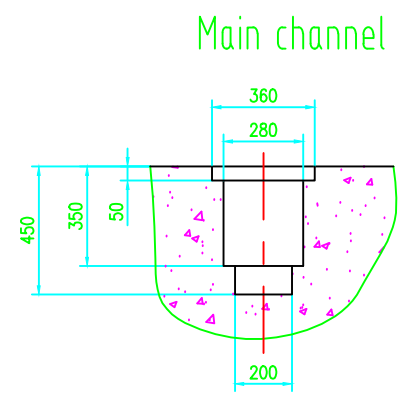
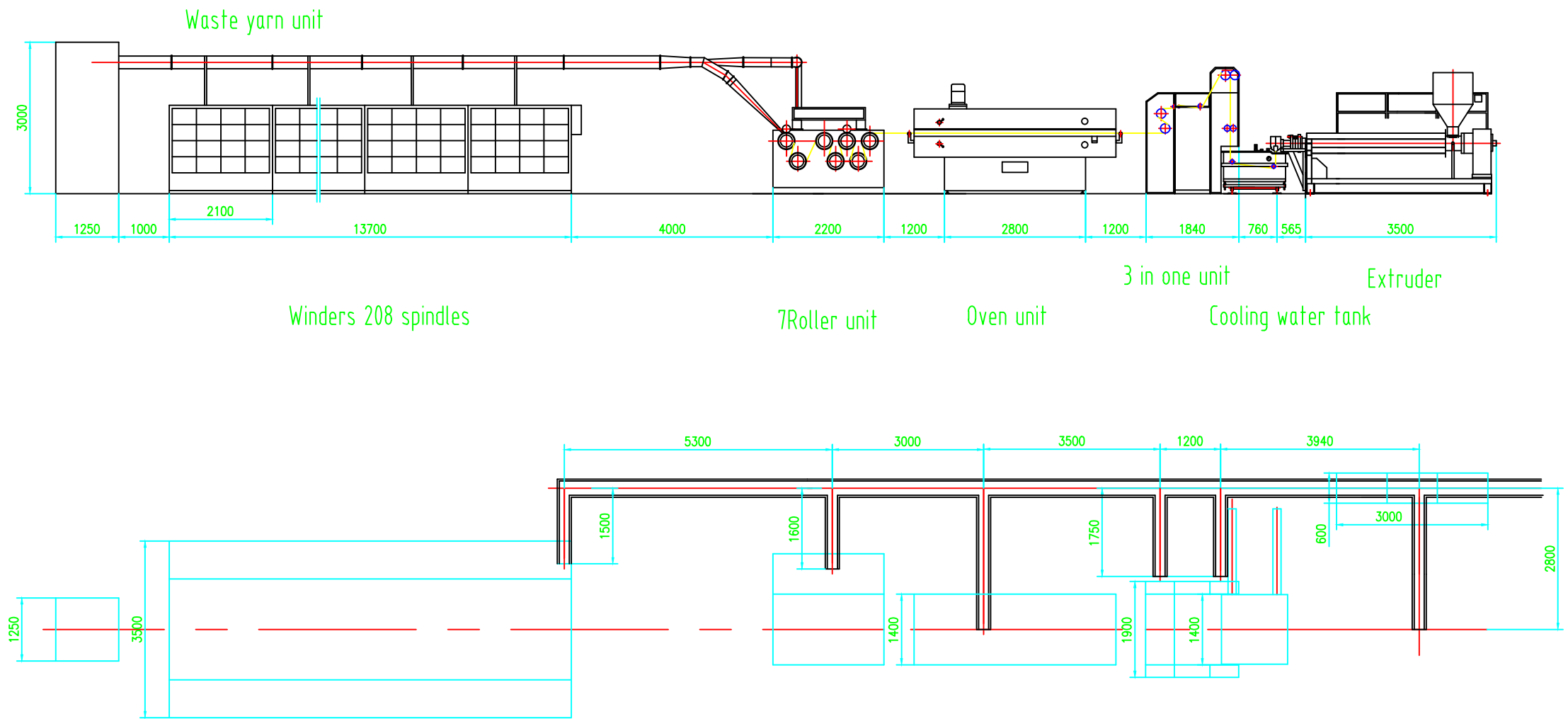


SJPL-90X33-1000 Plastic extruding flat film stretching line



- Remarks:
1. Main channel to wall distance more than 0.8m
 2. Electrical box change position, pls advice us before order
 3. Electrical power 380V,50HZ
- A. 3P 5L
 B. Air pressure $\geq 5 \text{ Kg/cm}^2$
 C. Water pressure $\geq 1 \text{ Kg/cm}^2$ following $\geq 0.1 \text{ m/min}$

设计	工艺	审核	日期	比例
制图	工艺	审核	日期	比例
工艺	工艺	审核	日期	比例